



# Proposal of optimum tool layout based on new work drawing!



Proposal according to request



Machine used



New work drawing

OSG provides comprehensive proposals including holders based on customer requests, machines used, and new work drawings.



## Extensive technical support is also provided

### Key Services

- ✓ Proposal of tool layout not only for machine introduction
- ✓ Selection of optimal OSG tools
- ✓ Supports special tools according to machining needs
- ✓ Creation of machining timetable based on work drawing
- ✓ Proposal of optimum cutting conditions according to the machining environment

Achieve highly efficient tool layout

# Flow of Tool Layout Proposal

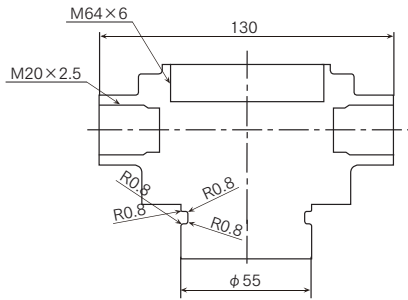
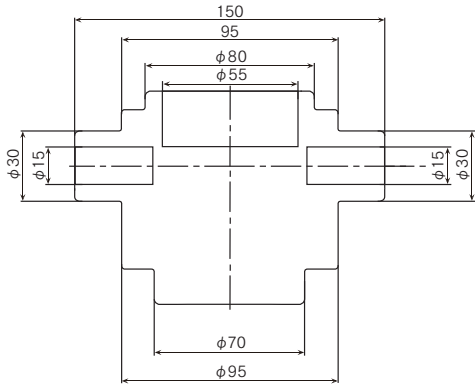
Work Material Drawing

+

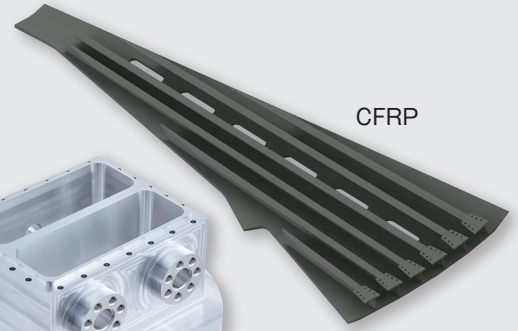
Work Drawing

+

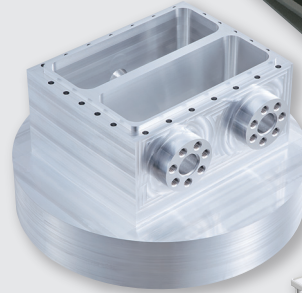
Machine Used



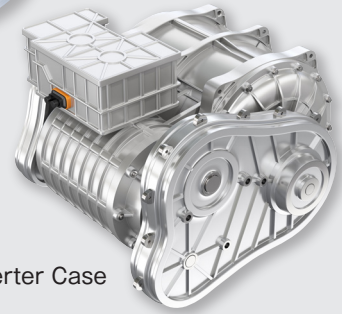
## Application Examples



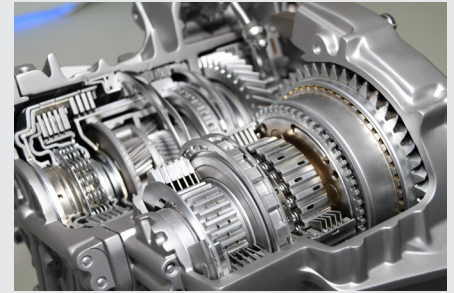
CFRP



Vacuum Chamber



Inverter Case



Decelerator

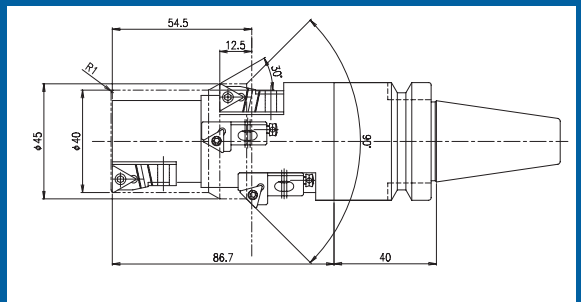
## Tool Layout

End User: ●●● Work Model: MISSION CASE Drawing No.: 6F15 Work material: ADC12													
TOOL LIST □1													
OP No.	T No.	Machine Operation	Tool	Supplier	Cutting D	OAL	FL	Shank D	Vc(m/min)	S(min <sup>-1</sup> )	Vf (mm/rev)	# of FL	Discription
<b>&lt; OP10 : Top face hole machining &gt;</b>													
10	3	Ø15.3 Drilling/ Chamfer for M16x1.5(C-C+707)	Drill Collet Holder Collet Retention Stud	OSG-NODA Company A Company A Company A	φ15.3	115	45	18	211	4,400	0.16		PCD-O-SC-BD Ø15.3xR0.9 BT30-abc22-75 abc-18022-O abc-o-MAS1
10	4	Tap M16x1.5(C-C+707)	Tap Syncro Tap Holder Tap Collet Retention Stud	OSG OSG OSG Company A	φ16.0	95	12	12.5	50	1,000	1.50		OIL-S-XPF M16x1.5 2P BT30-SMH32-120 ER32GH-12.5-10

Cutting Condition and Tool Layout Creation



Tooling Selection Support



Boring Cutter Design Possible

**OSG Corporation**

Contact Information

E-mail [toolayout@osg.co.jp](mailto:toolayout@osg.co.jp)